

RESOLUTION NO. 03-122

**RESOLUTION EXPANDING RURAL SPECIAL
IMPROVEMENT MAINTENANCE DISTRICT #680M
(RIVERVIEW ESTATES SUBDIVISION)**

WHEREAS, the Owners of lots 1 through 5 block 2 and lots 1 through 3 3rd filing of Riverview Estates Subdivision have requested to be included in RSID 680M and have requested the Board of County Commissioners to expand the boundaries of RSID 680M; and

WHEREAS, the proposed boundaries of the expanded district are described as Block 2 Lots 1-5 and Lots 1-3 3rd filing Riverview Estates Subdivision, Yellowstone County, Montana, (Exhibit A) and more particularly shown in Exhibits B (2nd filing map) and C (3rd filing map); and

WHEREAS, pursuant to §7-12-2161(4), MCA, the Commissioners have the power of changing, by resolution, the boundaries of any maintenance district not more than once a year; and

WHEREAS the boundaries of RSID 680M have not been changed within the last year.

NOW, THEREFORE, BE IT RESOLVED by the Board of County Commissioners of Yellowstone County, Montana, deeming the public interest or convenience require, and having received an adequate Petition for the expansion of the Rural Special Improvement Maintenance District, intends to expand the following described Rural Special Improvement Maintenance District:

- 1. DESCRIPTION OF IMPROVEMENTS, DESCRIPTION OF MAINTENANCE, METHOD OF ASSESSMENT AND ESTIMATED COSTS.** Assessments collected on behalf of this district shall be used for the maintenance, preservation, and repair of the streets located within the boundaries of this district. All of the costs of the district shall be assessed equally on a per lot method (Exhibit E) for existing and future lots. Estimated costs are shown in Exhibit D, but costs shown are not exclusive of other eligible street expenditures.

PASSED AND ADOPTED by the Board of County Commissioners of Yellowstone County, Montana, this 30th day of September, 2003.


BOARD OF COUNTY COMMISSIONERS
YELLOWSTONE COUNTY, MONTANA



Bill Kennedy, Chairman

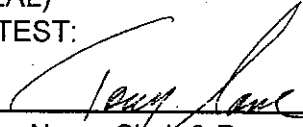


Jim E. Reno, Member



John Ostlund, Member

(SEAL)
ATTEST:



Tony Nave, Clerk & Recorder
Yellowstone County, Montana

Exhibit A

PETITION FOR THE EXTENSION OF AN EXISTING RURAL SPECIAL IMPROVEMENT DISTRICT (RSID)

SECTION B LEGAL DESCRIPTIONS

2nd filing:

Lots 1-5, Block 2 Riverview Estates Subdivision

3rd filing:

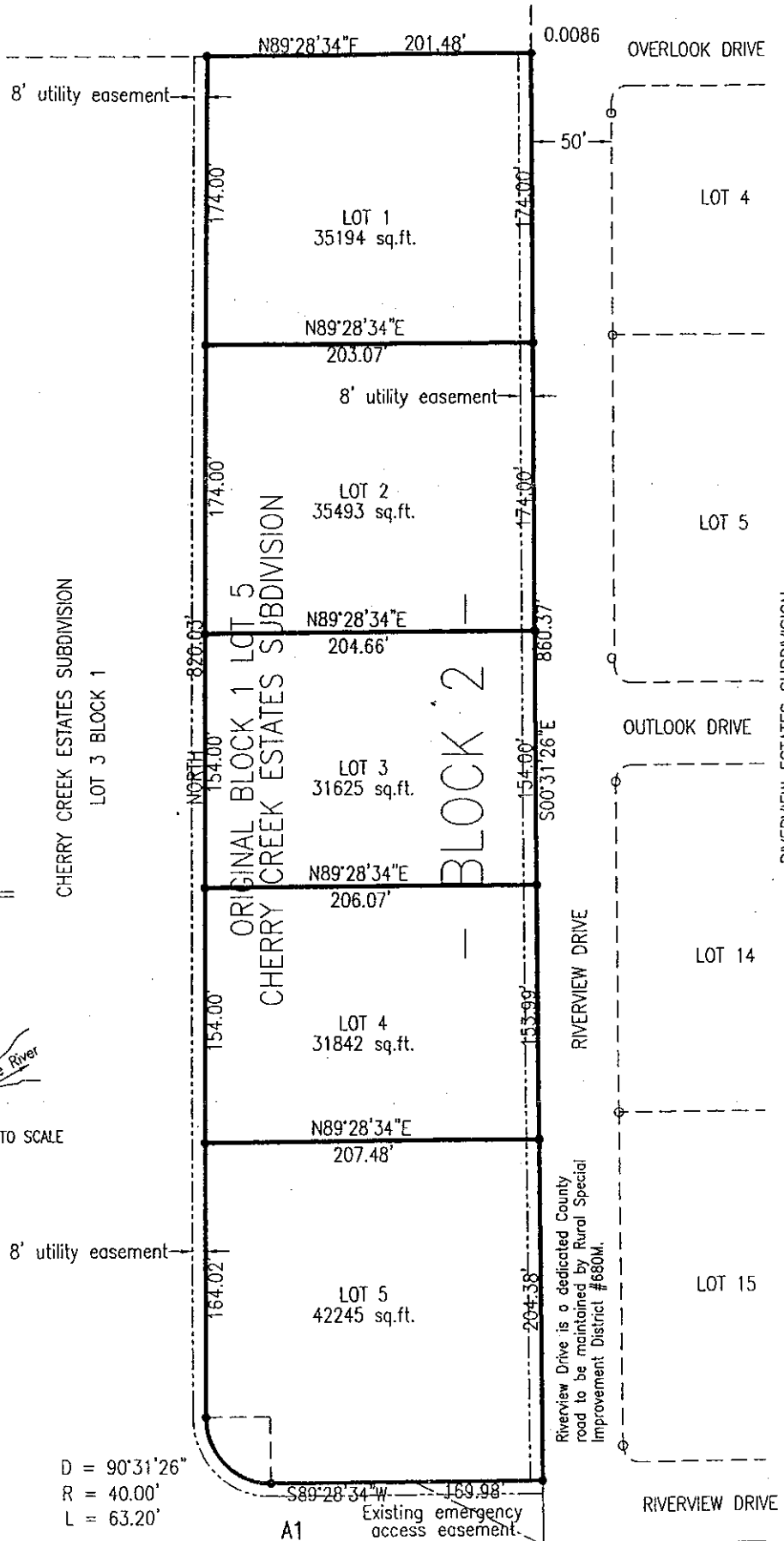
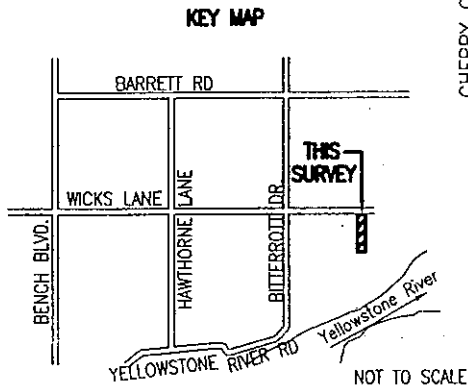
Lots 1, 2 and 3 Riverview Estates Subdivision

Exhibit B

PETITION FOR EXTENSION OF AN EXISTING
RURAL SPECIAL IMPROVEMENT DISTRICT (SID)

SECTION A

MAPS OF RURAL SPECIAL IMPROVEMENT DISTRICT BOUNDARY (ATTACHED)



D = 90°31'26"
R = 40.00'
L = 63.20'

Exhibit C

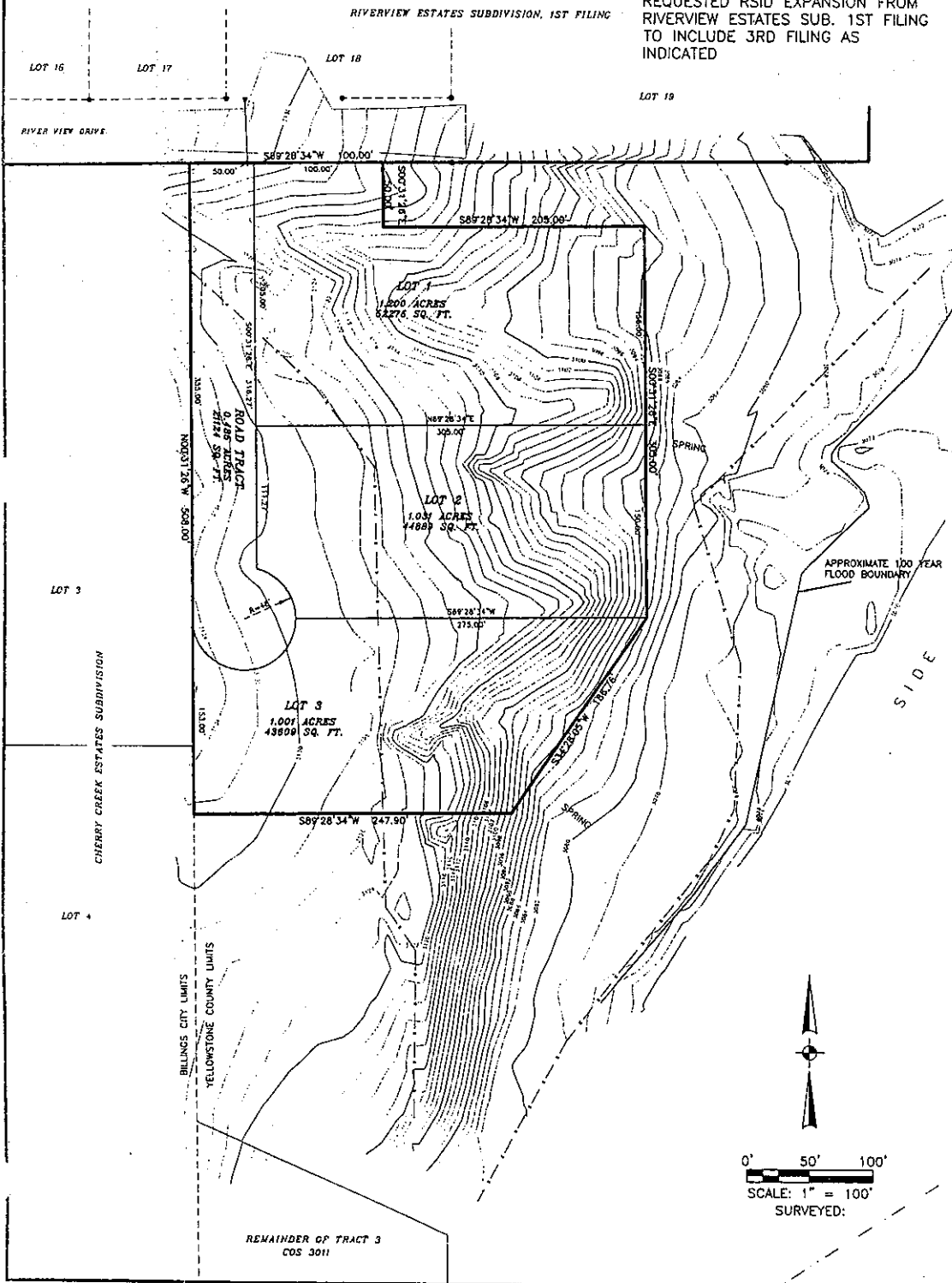
RIVERVIEW ESTATES SUBDIVISION 3RD FILING

SITUATED IN THE NW1/4 AND THE NE 1/4 OF SECTION 24,
T.1N., R.26E., P.M.M., YELLOWSTONE COUNTY, MONTANA

SURVEYED BY: ESSEX SURVEYING, INC.
P.O. BOX 80201
BILLINGS, MT 59108
(406) 670-5726

SURVEYED FOR: CHERRY CREEK DEVELOPMENT, INC.
ROY CLAUSE, OWNER
JOCK CLAUSE, OWNER

REQUESTED RSID EXPANSION FROM
RIVERVIEW ESTATES SUB. 1ST FILING
TO INCLUDE 3RD FILING AS
INDICATED



**PETITION FOR EXTENSION OF AN EXISTING
RURAL SPECIAL IMPROVEMENT DISTRICT (RSID)**

**SECTION C
ESTIMATED ANNUAL MAINTENANCE COST**

FALL MAINTENANCE:

ACTIVITY	ESTIMATED COST
Road Grading 1 X/fall	\$300.00
	\$

WINTER MAINTENANCE:

ACTIVITY	ESTIMATED COST
Snow plowing 2X/winter	\$600.00
	\$

SPRING MAINTENANCE:

ACTIVITY	ESTIMATED COST
Road Grading 1X/spring	\$300.00
	\$

SUMMER MAINTENANCE:

ACTIVITY	ESTIMATED COST
Weed Control 1X/summer	\$130.00
	\$

\$1330.00/5 lots = \$266.00/lot/year

TOTAL ESTIMATED ANNUAL MAINTENANCE COST: \$1330.00

Exhibit E

PETITION FOR EXTENSION OF AN EXISTING RURAL SPECIAL IMPROVEMENT DISTRICT (RSID)

SECTION D METHOD OF ASSESSMENT

CHOOSE A METHOD OF ASSESSMENT:

Square Footage:

Equal Amount:

Front Footage:

Other (Describe):